

ASTRO S

30 W LED, 3000 K / 4000 K, CRI 70

STRIHL
LIGHTING



APPLICATIONS

- Streets and roads
- Parking lots
- Industrial areas
- Residential areas
- Public places
- Roundabouts
- Parks

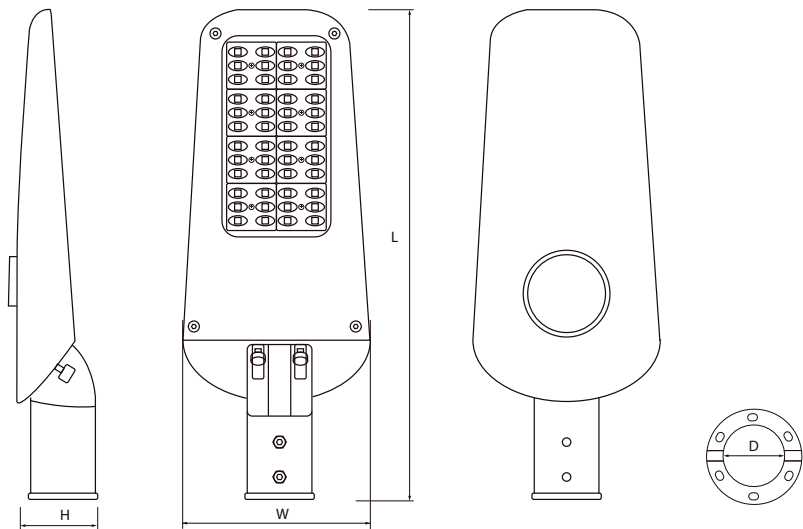
FEATURES

- **Energy-efficient operation** up to 160 lm/W luminous efficacy
- **IP66 & IK08 rated** - high durability for outdoor use
- **Flexible mounting** - adjustable bracket for pole-top or arm
- **Robust construction** - luminaire housing in die-cast aluminum with tempered glass
- **Dirt-repellent design** - curved top keeps dirt and debris away

A compact and efficient street luminaire with a robust construction and a luminous efficacy of up to 160 lm/W. The integrated, reversible pole bracket allows for adjustment of the luminaire's angle, and the lightly curved top helps to keep the luminaire free from dirt. It is ideally suited for lighting streets, parking areas, parks, and similar environments.

DIMENSIONS, WEIGHT & ASSEMBLY

Dimensions (L × W × H)	Dimensions (D)	Weight	Mounting method
436 × 174 × 70 mm	65 mm	2,48 kg	Post-top/arm



ASTRO S

30 W LED, 3000 K / 4000 K, CRI 70

STRIHL
LIGHTING

GENERAL DATA

Certificates	CE
According to applicable standard	EN 60598-1:2015+A1, EN 60598-2-3:2003+A1, EN 62493:2015
EMC Driver/luminaire according to	EN55015, EN61000-2-3, EN61547
Recommended mounting height	3-20 m based on power
Minimum mounting height	3 m (to ensure photobiological safety)
Pre-assembled cable	Yes
Options	External surge protection 10 kV, programmable drivers (for optional night-time dimming in up to four steps)

CONSTRUCTION

Material	Aluminum, tempered glass
Surface treatment	Powder coating
Corrosivity class	C5
Ingress protection rating	IP66
Vandal resistance class	IK08
Standard color	Silver RAL 9006*

» * Andra RAL-färger på beställning

ELECTRICAL DATA

Power	30 W
Control	0-10 V as standard, DALI2 on request
Surge protection	4 kV
LED lifetime	50,000 hours *
Operating temperature range	-20° to +50 °C
Mains voltage	220-240 V AC/50-60 Hz
Electrical safety class	I EU or II EU

» * Beroende på effekt och omgivande temperatur.

PHOTOMETRIC DATA

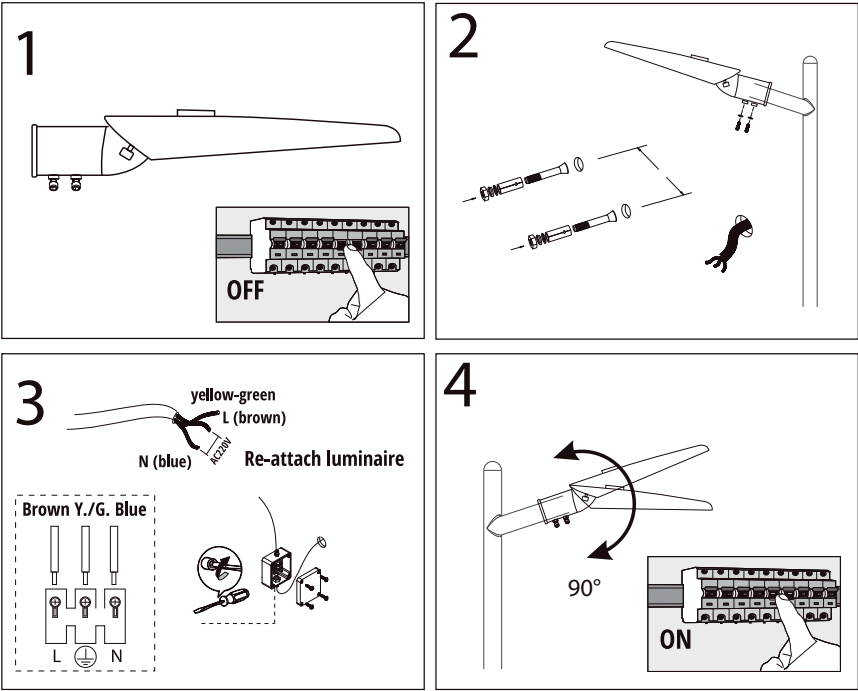
Color temperature (K)	3000 K as standard, 4000 K on request
Color rendering (CRI)	CRI 70
Luminous efficacy (lm/W)	Up to 160 lm/W
SDCM	<5

» * Beroende på armaturens konfiguration.







ASTRO S

30 W LED, 3000 K / 4000 K, CRI 70

MOUNTING



ACCESSORIES

Article	Type		Description
3790100	Adapter straight pole 90°		For 60mm pole top Made of hot-dip galvanized steel.
37901014	Adapter straight pole 2 arms 90°		For 60mm pole top Made of hot-dip galvanized steel.
3790101	Adapter straight pole 2 arms 180°		For 60mm pole top Made of hot-dip galvanized steel.
3603	Adapter straight pole 4 arms 90°		For 60mm pole top Made of hot-dip galvanized steel.
1011011	Wallbracket 48mm street luminaire		For mounting a street luminaire on a wall or facade. Arm diameter Ø 48 mm. Made of hot-dip galvanized steel.
10110113	Cornerbracket 60mm arm 10dgr, street luminaire		For mounting a street luminaire on a 90° corner. Arm diameter Ø 60 mm, angle 10°. Made of hot-dip galvanized steel. Powder coated RAL 9006

